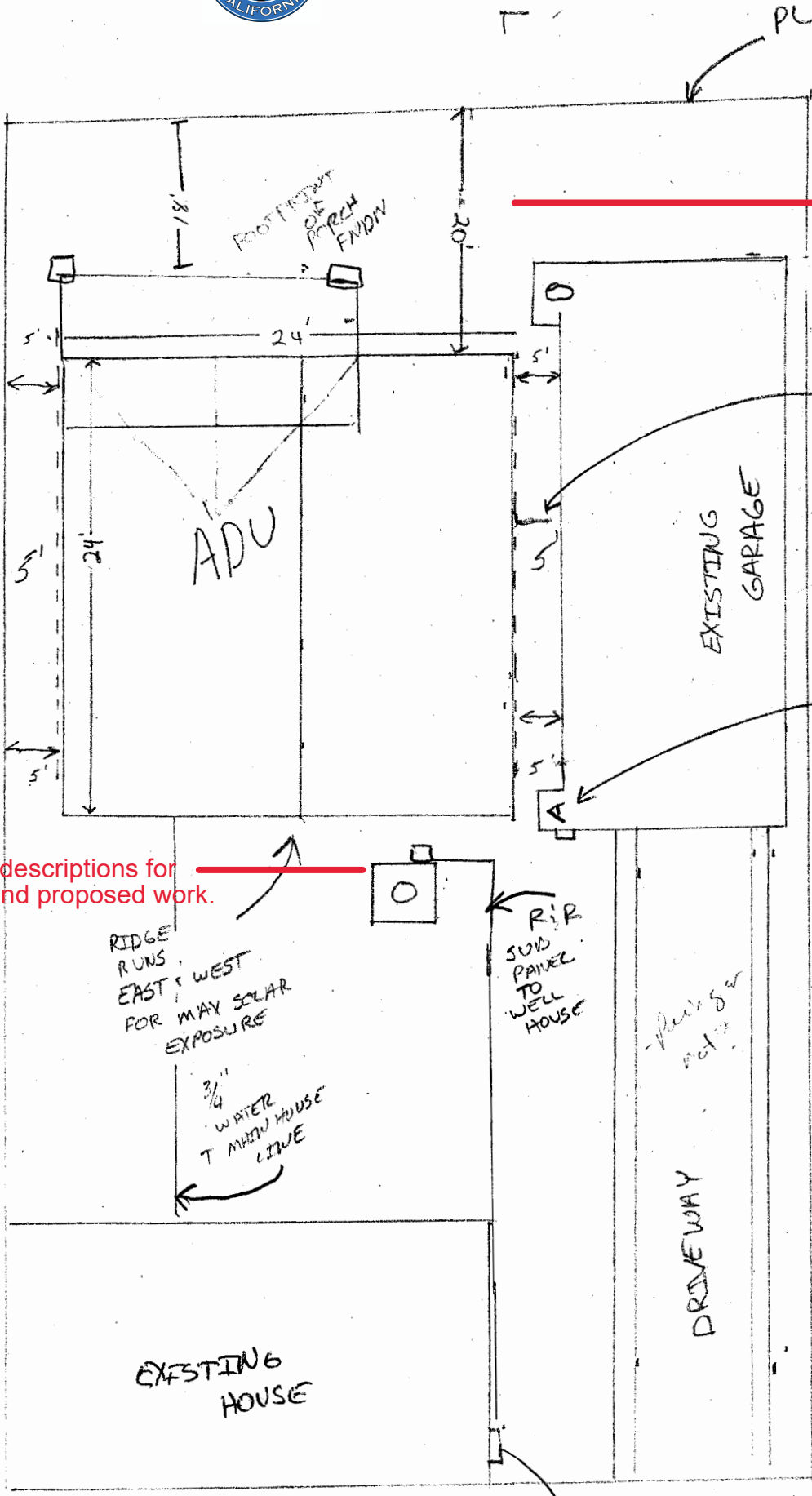




Example of Site Map

Please contact the
Community Development
Department at (707)
961-2827 with any questions.

Sample Street



Provides measurements for ALL setbacks including from existing structures and parcel lines.

4" CONNECTION TO EXISTING SEWER

BUMP OUT TO BE REMOVED TO MAINTAIN 5' CLEARANCE

Provides descriptions for existing and proposed work.

RIDGE RUNS EAST & WEST FOR MAX SOLAR EXPOSURE
3/4" WATER MAIN HOUSE LINE

RIP SUDS PANEL TO WELL HOUSE

PRESSURE TANK

36"

A

SUB

18"

ELEC SERVICE MAIN

Provides street names

Other Avenue