

# BAINBRIDGE PARK ENHANCEMENT PROJECT

CITY OF FORT BRAGG

JANUARY 10, 2024

## THE TEAM

### Melton Design Group

Greg Melton  
Patrick Farrar  
Connor Melton  
Sarah Richelieu

### City of Fort Bragg

Chantell O'Neal  
Emily Reno



**PROP 68**

# BAINBRIDGE PARK



This project scope includes various new amenities as well as rehabilitation of existing features, including:

- The Construction of a new multi-use pavilion with electrical and water access
- Construction of two 50' X 80' fenced, artificial surface soccer pitch w/lights
- New public art and landscaping throughout the park
- Master lighting control system and new lights
- Poured ADA surfacing for the 11,000sf playground area
- Camera System for Park
- Minor Cosmetic and Maintenance Upgrades to Existing Bathroom Facilities
- Incorporating Existing Drainage into the Park Layout

**PLAYGROUND CONSTRUCTION  
STATUS UPDATE**

# BAINBRIDGE PARK



# **VETERANS MEMORIAL BUILDING**

# BAINBRIDGE PARK



**PRIOR PUBLIC  
OUTREACH SYNTHESIS**



# BAINBRIDGE PARK



### Basketball Court



Existing Facilities

**Master Plan Ideas**

- Resurface court ●●●●●●●●
- Expand court ✗ ●●
- Add court(s)
- Replace goals ✗
- Add benches ✗ ●
- PAINT ●●●●●●
- LIGHTS ●

●●●●●●●● LANDSCAPING NEARBY

Bainbridge Park Plan - Workshop

### Benches



Potential Facilities

**Master Plan Ideas**

- ARTIST Benches ●●●●
- TRADITIONAL Benches ●●●●
- Memorial Benches ●

Bainbridge Park Plan - Workshop

### Community Garden



Potential Facilities

**Master Plan Ideas**

- FOOT TRAFFIC ●●●●●●●●
- GREENHOUSE ●●●●●●●●
- PLOT RENTAL ●●●●●●●●
- TREES ●●●●●●●●
- NATIVES ●●●●●●●●
- FENCE ●●●●●●●●

Bainbridge Park Plan - Workshop

### Covered Structure



Potential Facilities

**Master Plan Ideas**

- GROUP ACTIVITY
- RAISED UP
- ELECTRICAL Connections ●
- SOLAR ROOF ●●●●●●●●
- BANDSTAND ●●●●●●●●
- MARKET (Public) ●●●●●●●●
- RESERVATIONS for use
- ADULT SWINGS ●●●●●●●●

Bainbridge Park Plan - Workshop



# BAINBRIDGE PARK

**Fencing**

**Master Plan Ideas**

MATCH PLAYGROUND Fencing

**Games**

**Master Plan Ideas**

- Climbing Structure
- Chess Tables
- Volleyball
- Petanque
- ADJUSTABLE NET
- GOLF / PUTT

Potential Facilities

Bainbridge Park Plan - Workshop

**Landscaping**

**Master Plan Ideas**

- NATIVE/TREES
- RAIN CATCHMENT
- H<sub>2</sub>O TANKS
- DISPLAY GARDEN
- CORRIDORS
- TREES
- GRASSY LAWNS
- Resealing

**Other Additions**

**Master Plan Ideas**

- Grills
- Picnic Tables
- BIKE RACK
- SOLAR STATION
- SIGNAGE (HOURS/RULES)
- TRASH CANS
- SECURITY CAMERA UPDATE

Potential Facilities

Bainbridge Park Plan - Workshop





# BAINBRIDGE PARK

Park Features	For	Against	Most Favored Program Elements	Least Favored Program Elements
Covered Structure	22	5	Adult swings, electrical, solar roof, bandstand, market	
Tennis Courts	16	2	Resurfacing courts, replacing nets, practice wall, lower height	
Fencing	14	14	Match playground fencing	
Public Art	10	12	Security, interactive, ocean theme, sidewalk timeline, interpretive, stories	
Basketball Court	7	0	Expand court, add benches, lights	Landscaping
Games	6	0	Chess tables, exercise course, petanque, adjustable net	Batting cage, golf/putting green, climbing structure
Wiggly Giggly Playground	5	0	Fix gates	Expand playground
Benches	4	0	Traditional and memorial benches	Artist benches
Plaza or Town Square	3	7		Transients (Like Arcata town center)
Landscaping	2	5	Native/trees, rain catchment, H2O tanks, display garden, corridors, trees	Grassy, lawns
Community Garden	1	26	Trees, natives, fence	Greenhouse

		Votes in Favor	Votes Opposed
<b>Most Favorable</b>	Pentanque	20	0
	Covered Structure	26	5
	Public Art	26	12
	Improve Tennis Courts	32	2
<b>Favorable</b>	Landscaping	17	9
	Grills	11	0
	Improved Basketball Court	10	0
<b>Not Favorable</b>	Batting Cage	1	8
	Golf or Putt-Putt	0	11
<b>Least Favorable</b>	Community Garden	0	32
	Plaza or Square	3	19

# BAINBRIDGE PARK





# BAINBRIDGE PARK

## MOST FAVORABLE

## LEAST FAVORABLE



**Pentanque**



**Grills**



**Community Garden**



**Mini Golf**



**Covered Structure**



**Batting Cage**



**Plaza or Square**



**Public Art**



**Landscaping**

**WIGGLY GIGGLY  
PLAYGROUND**



# BAINBRIDGE PARK

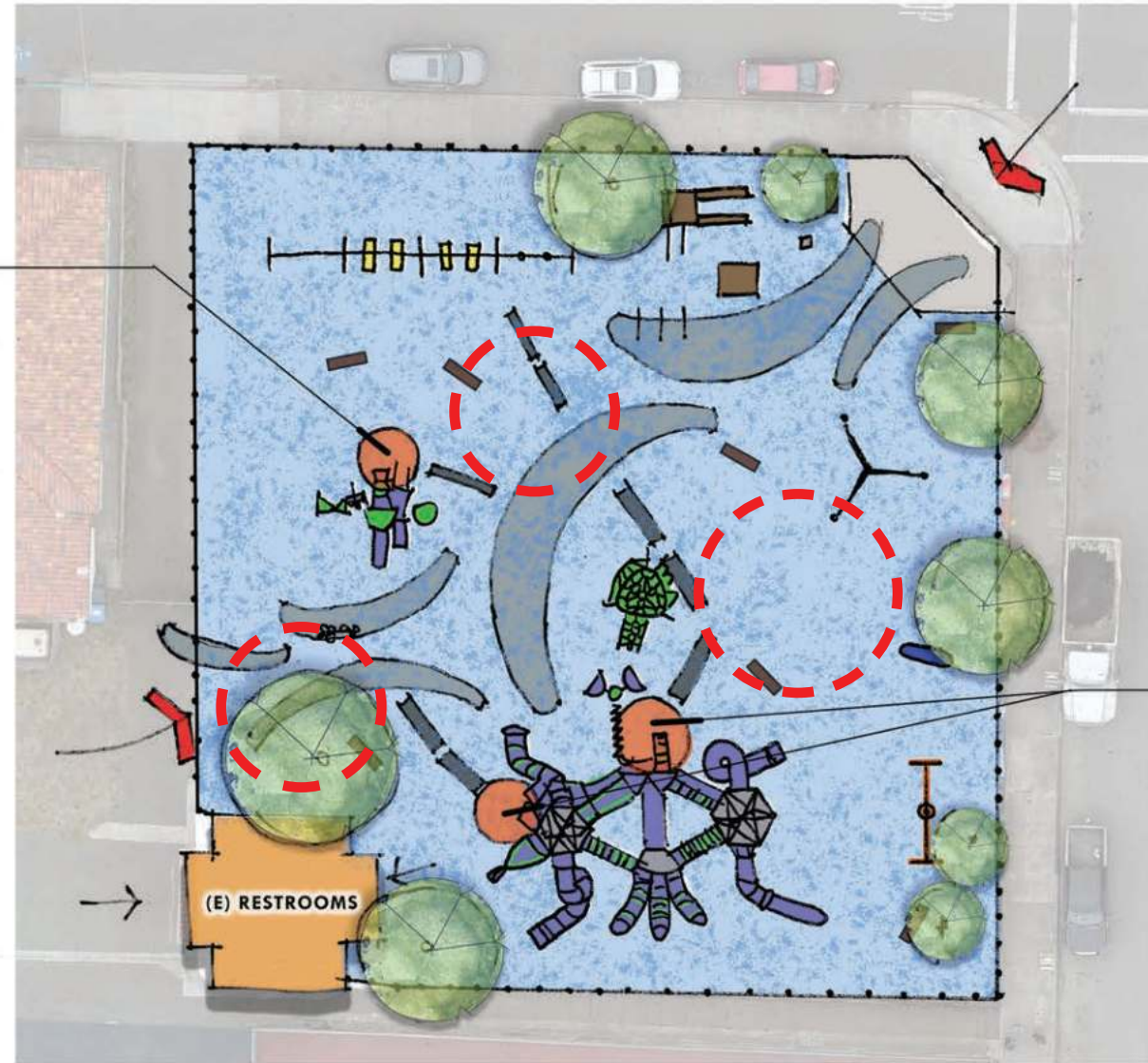




# BAINBRIDGE PARK



TRANSFER STATION



N.T.S

--- Opportunity for seating area



TRANSFER STATION





# BAINBRIDGE PARK



Model Number: 13280

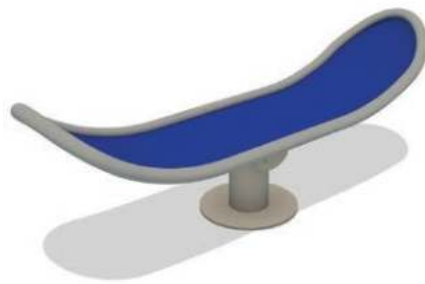


## Balance Board Station

We created the GTfit Balance Board to provide a wide range of fitness benefits in a single, space-saving design. Standing on the platform activates the spring, creating a balancing exercise that enhances core strength. Hand grips molded into the platform makes the Balance Board perfect for push-ups that give you an additional core workout at the same time.



Model Number: 8475



## Surfboard

The Surfboard is designed at wheelchair transfer height so a child can easily move onto the Surfboard and start to play! The surface area is spacious enough for several children to sit or stand together. The upturned arms allow the user to sit or lie supported on the surface, which is beneficial for those who require some extra postural support. The wide surface is covered in a textured poured rubber ensuring users feel safe and secure while sitting or standing.



Model Number: 8645



## Adult Fitness Unit

This adult fitness package is perfect for parks and trails. Featuring multiple stations for a full-body workout, it's a great way to bring your community outdoors for exercise. GTfit products combine high quality, durable products with research from industry-leading professionals to create a flexible outdoor fitness solution for your community.



Model Number: 32022



## Hex Pod

Hex pod is a versatile addition to any playground. It can act as a seat and be arranged in a set with other hex pods or stand alone so children can retreat from the noise and activity until they are ready to engage in play again. It can also be used with other hex pods as balance steps to functionally link play elements and enhance a child's coordination. It is made of rotomolded plastic with a textured surface for additional support while climbing.



Model Number: 32066

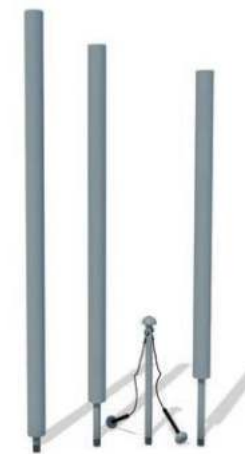


## TriNet (Medium)

TriNet (Medium) is an exciting climbing structure that can be used as a freestanding play activity, connected to a PowerScape play system or linked to other TriNet climbers of varying sizes. The combination of nets, metal and HDPE plastic materials create varying levels of challenge, climbing experiences and routes of travel for up to 10 children. Aluminum frame, rungs and HDPE climber components available in all standard metal and plastic colors. Nets only available in black.



Model Number: 4676



## Harmonic Chimes - Set of 3

GT Symphony™ is a collection of precision-tuned musical instruments designed in partnership with Freenotes™ Harmony Park, a PlayCore Company. Add a symphony of inclusive music to your GameTime playground!

# BAINBRIDGE PARK



Model Number: 13576



## Hurdle Station

Aerobic workouts keep the heart and lungs functioning at optimum levels. The hurdle station is an aerobic fitness station that allows the user the opportunity to perform a variety of aerobic/agility based exercises.



Model Number: 10777



## Tire Swing

A modern take on a playground classic, our tire swing is constructed of molded plastic, so there's no messy residue like the tire swings of old. It's large enough for up to three users (ages 2-5 or 5-12) and it attaches to a PowerScape swing frame with a 360° mount so children can swing and spin in every direction. Includes mounting hardware, PowerScape swing frame sold separately.



Model Number: 14904



## Skill Trainer

The Skill Trainer is designed to help enhance fine motor skills, coordination, flexibility and balance. It provides multiple exercise options, including the Finger Walk and Ring Trace. The Ring Trace includes three different heights (standing, seated on the included Comfort Seat or seated in a mobility device). Users grasp a colored ring and slide it from one side of the bar to the other without allowing the ring to touch the bar.



Model Number: 81748



## Beat Club

Add a lot of sound in a small space with Beat Club - a six-instrument collection of GT Jams instruments that includes Bongos, Ashiko and Djembe for inclusive, percussive fun. Includes the GT Jams Playbook curriculum.



Model Number: 6242

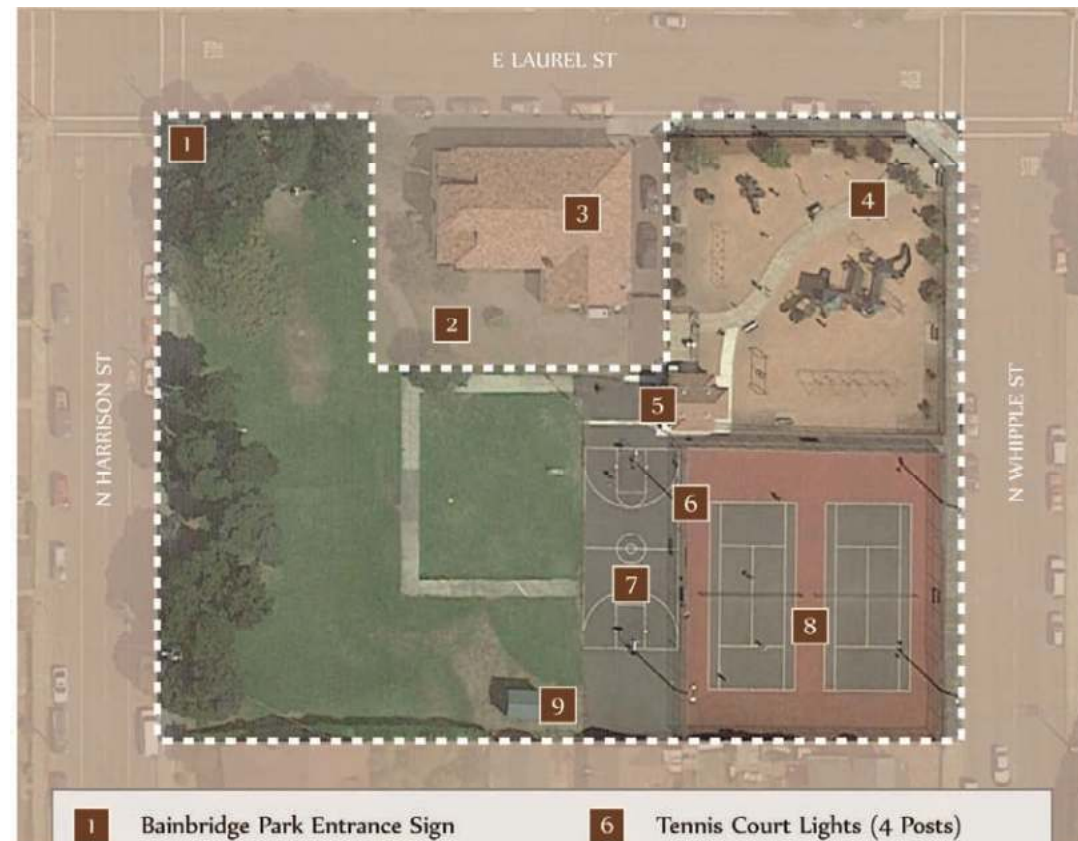


## ShadowPlay® TriRunner®

We developed a new way for children and adults to enjoy the sensation of flight on the playground: the TriRunner®. The patent-pending design features three soft touch molded seats attached to the same ComfortGrip™ ropes found on our SkyRun® ZipTrack and ZipLine. As users spin around, the panels disperse fun shadows on the ground below.

# **PREFERRED DESIGN OPTIONS**

# BAINBRIDGE PARK



- |   |  |
|---|--|
| <b>1</b> Bainbridge Park Entrance Sign      | <b>6</b> Tennis Court Lights (4 Posts) |
| <b>2</b> Mendocino County Property Boundary | <b>7</b> Basketball Court              |
| <b>3</b> Veterans Hall (Historic Building)  | <b>8</b> Tennis Courts                 |
| <b>4</b> Wiggly Giggly Playground           | <b>9</b> Utility and Maintenance Shed  |
| <b>5</b> Public Restrooms                   |  |

Existing Facilities Map





# BAINBRIDGE PARK

## Design Option 1



- OPEN EDGE TREATMENT**
- NATURAL LOG BENCHES
  - CLIMBING BOULDERS
  - HOPSCOTCH
  - CHIMES
  - SEATING STONES
  - CLIMBING STUMPS

- SHADED SEATING AREA**
- OPEN TO STREET
  - SOCCER SPECTATOR VIEWING



- CENTRAL PLAZA**
- OPEN EVENT SPACE
  - PATIO OFF OF VETERANS BUILDING
- PICNIC EVENT SPACE**
- TABLES
  - BBQ'S

# Design Option 2

# BAINBRIDGE PARK



- EDGE TREATMENT**
- NATURAL LOG BENCHES
  - CLIMBING BOULDERS
  - HOPSCOTCH
  - CHIMES
  - SEATING STONES
  - CLIMBING STUMPS



Scale : 1" = 40'





# BAINBRIDGE PARK

Design Option 1





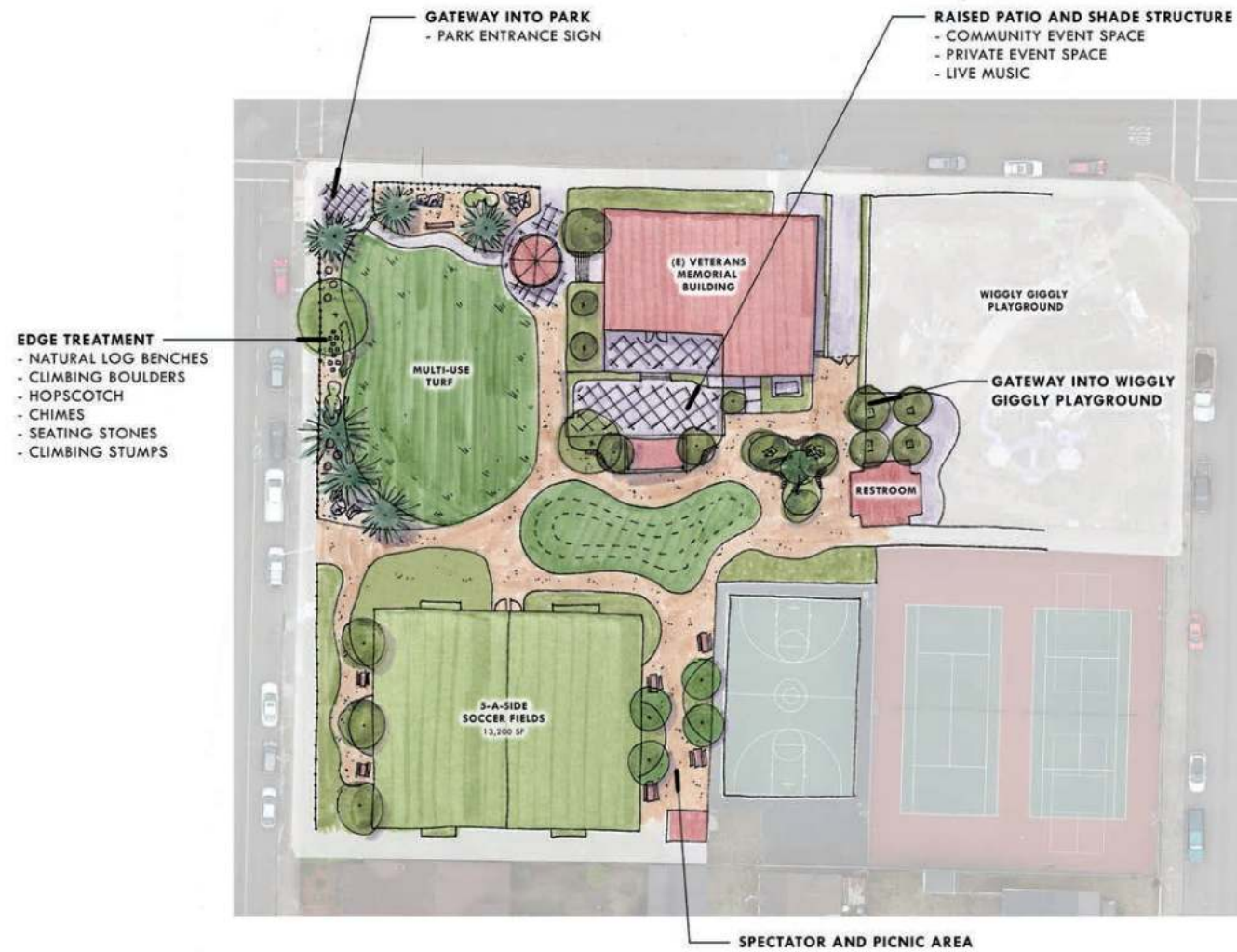
# Design Option 2

# BAINBRIDGE PARK

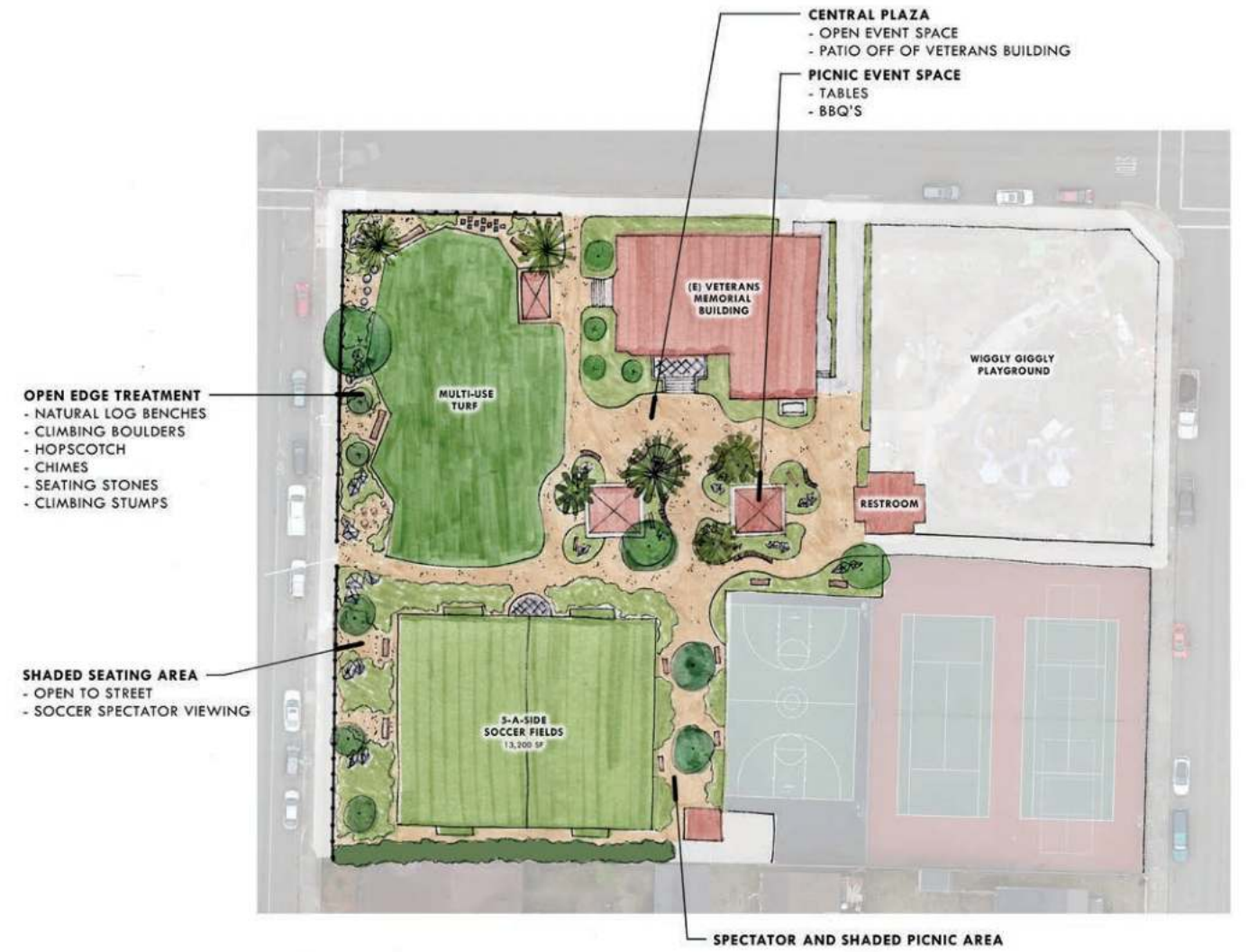


# QUESTIONS AND ANSWERS

# BAINBRIDGE PARK



**Option 1**



**Option 2**

# NEXT STEPS

# BAINBRIDGE PARK



**Public Design Workshop: 1-10-2024**

**Finalize concept & Approval February 2024**

**Construction Documents February – June 2024**

**Construction: Summer 2024**

**Grand Opening: December 2024**