



Noyo Center

For Science & Education

at Fort Bragg

7-15-2010

Project Progress

- 2005 - Community workshops, expert panel review, Strategic Plan
- 2008 - Detailed Development Program
- 2009 - Develop partnership with Sonoma State University
- 2010 - Prepare schematic architectural plans, CEQA review, property acquisition, project permitting, submit \$7 million Prop 84 construction grant

Project Purpose

- Build sustainable understanding and change on the Mendocino Coast
- Connect nature education with marine research activities
- Promote social interaction/experience to inspire environmental stewardship
- Serve underserved area of the North Coast and large visitor population
- Kick-start the reuse of the GP Mill Site

Project Programs

- Nature and Interpretive Center
- Community Education and Action
- Marine Research for all Non-Profit and Educational Institutions.



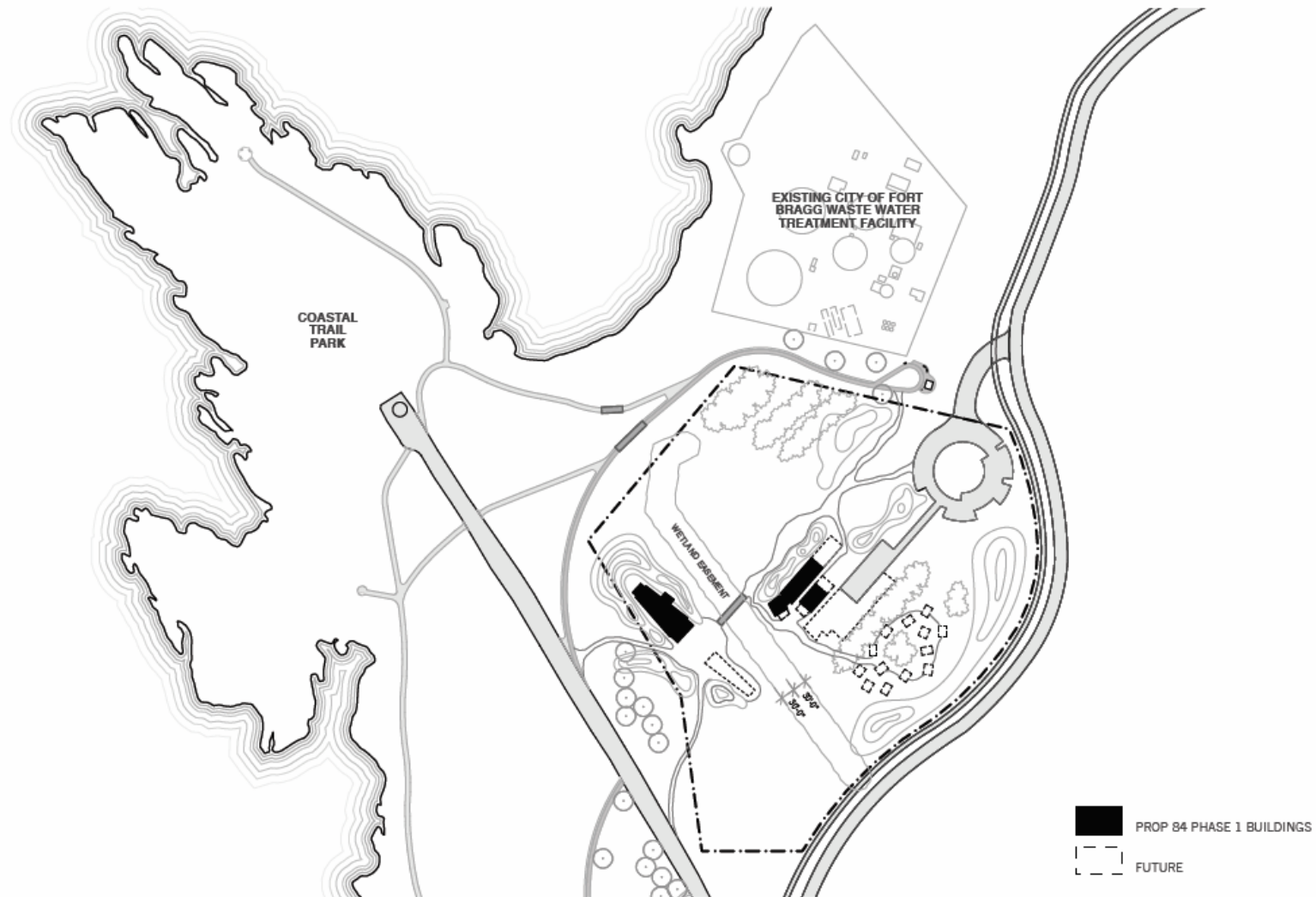
Project Setting

- 425-acre Mill Site, overlooking the Pacific Ocean
- 10-acre facility site
- Adjacent to 20-acre preserve and 92-acre Coastal Trail
- Adjacent to redwood forest, the Mill Pond area, and Noyo Harbor.
- The quality and accessibility of the intertidal and nearshore habitats of this site make it ideal for marine and ecological research.





Vicinity Plan



NOYO CENTER FOR SCIENCE AND EDUCATION

A Project of the City of Fort Bragg and Sonoma State University

BAUER AND WILEY
ARCHITECTS

JONES JONES
ARCHITECTS
LANDSCAPE ARCHITECTS
SINCE 1985

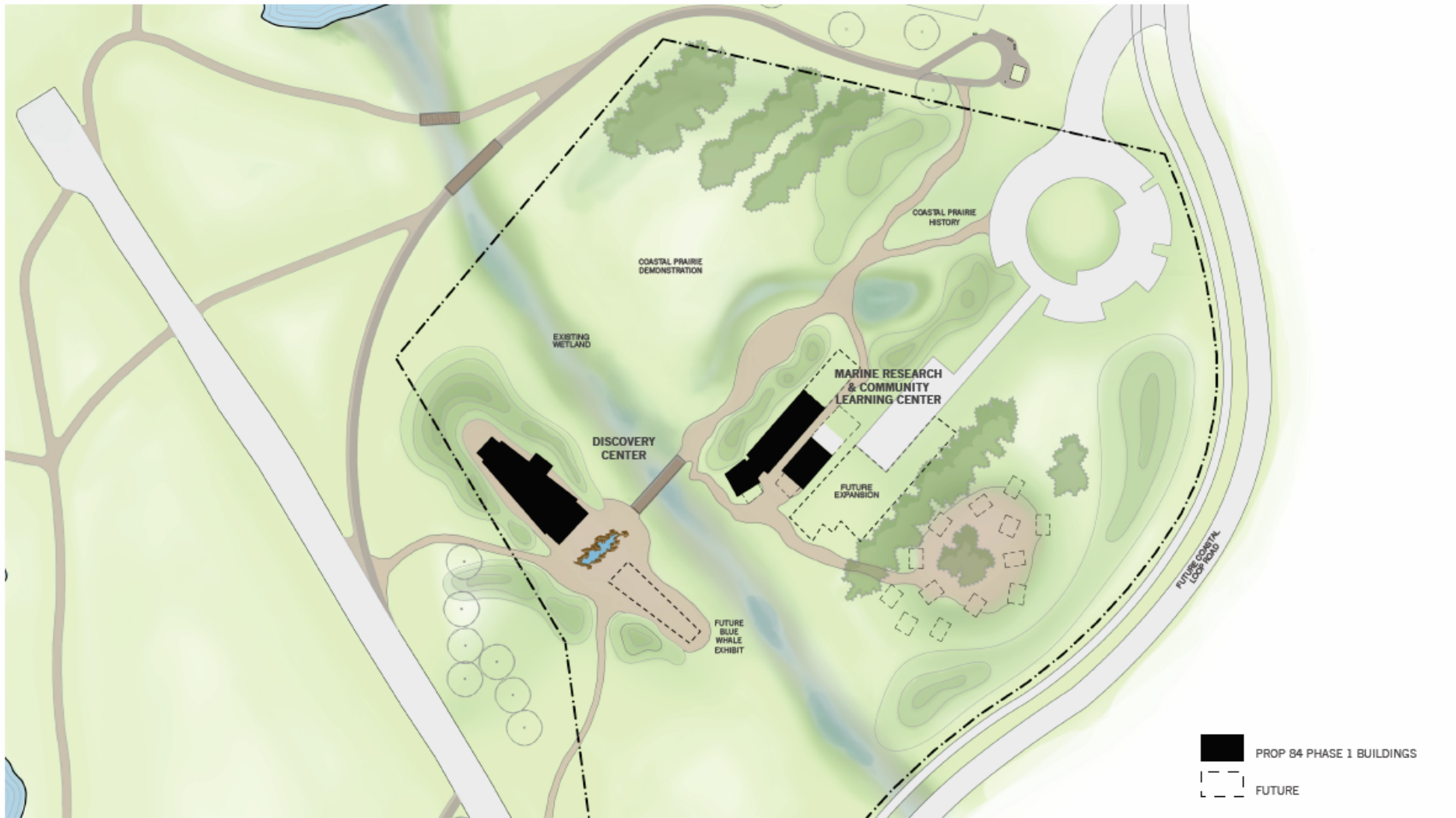


VICINITY PLAN

SCHEMATIC DESIGN

June 2010

Site Plan



NOYO CENTER FOR SCIENCE AND EDUCATION

A Project of the City of Fort Bragg and Sonoma State University

BAUER AND WILEY
ARCHITECTS

JONES JONES
ARCHITECTS
LANDSCAPE ARCHITECTS
SINCE 1981



SITE PLAN
SCHEMATIC DESIGN
June 2010

Project Description

Phase I

- LEED-silver buildings
- 5,600 SF Nature Center with a variety of interpretive exhibits, including 30,000 gallons of public aquarium
- 4,200 SF marine conservation research laboratory
- 1,400 SF essential support facility

Phase II

- 3,600 SF of housing for marine researchers
- Possible 72-foot blue whale skeleton exhibit
- Tidal mesocosm
- Solar power, wind power, and co-generation facility (with City's Waste Water Treatment Facility)

Discovery Center

Three exhibit Areas

- Forest
 - River
 - Sea
1. Basic description of the original resource and its desired restored condition
 2. Historical use and/or abuse/extractive uses and their costs contrasted with the current condition of the resource
 3. The state of evaluative research and science - resource science, monitoring and restoration techniques
 4. Options for desired solutions - tactics, opportunities, activities by visitors- personal, community or political.



Discovery Center

3 Zones within each Exhibit Area

- **Nature zone**, provides an experience like a more traditional aquarium or nature center
- **The History zone** resembles a “museum” in character
- **The Research zone** recalls a science center or marine lab in character.
- **Climate Change** and its local effects will be noted through a special set of portable, highly visible overlay exhibits – purposely designed to be flexible, updateable and easy to move and revise.



Discover Center Floor Plan

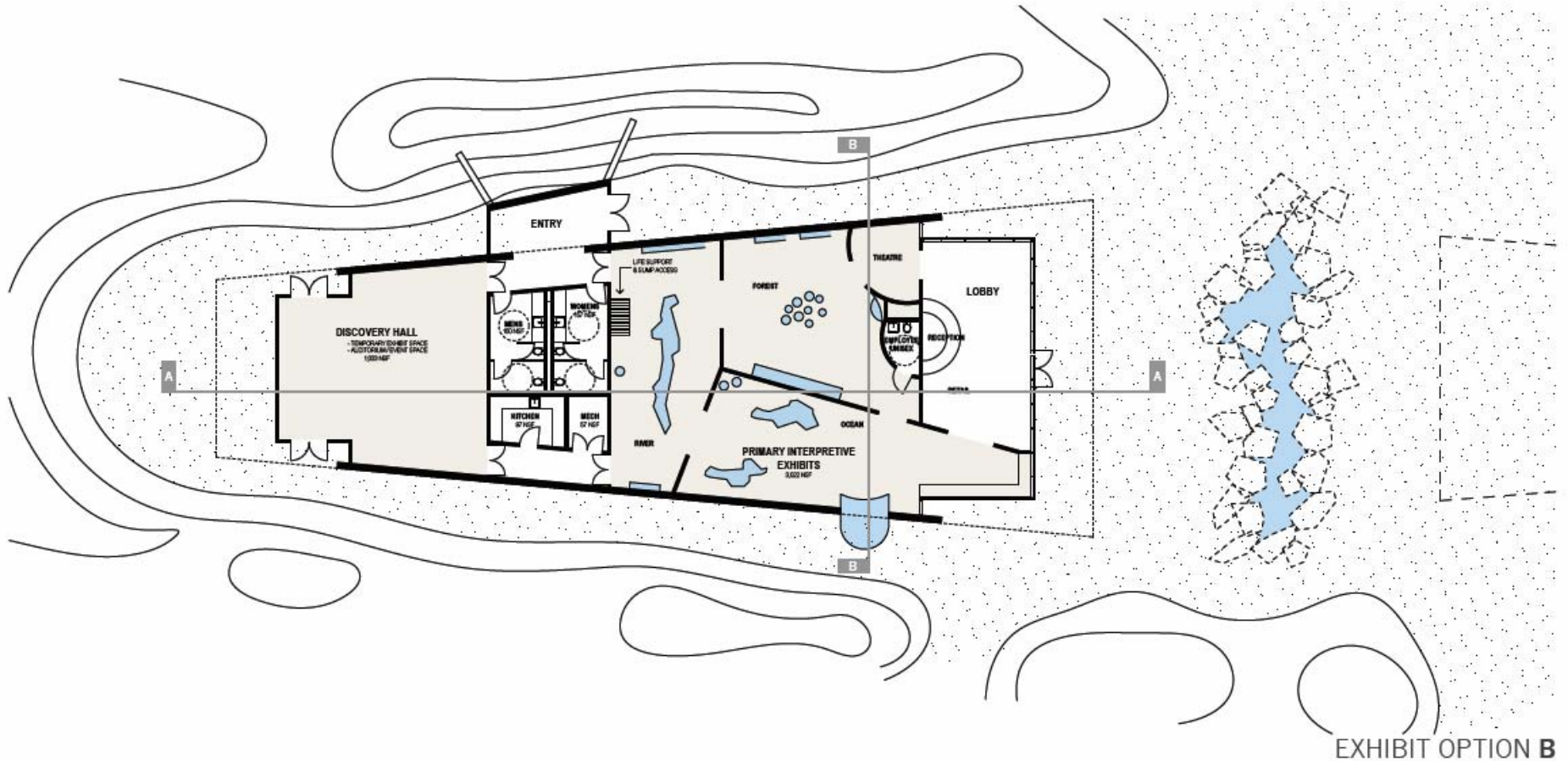


EXHIBIT OPTION B



NOYO CENTER FOR SCIENCE AND EDUCATION

A Project of the City of Fort Bragg and Sonoma State University

BAUER AND WILEY ARCHITECTS JONES & JONES ARCHITECTS LANDSCAPE ARCHITECTS

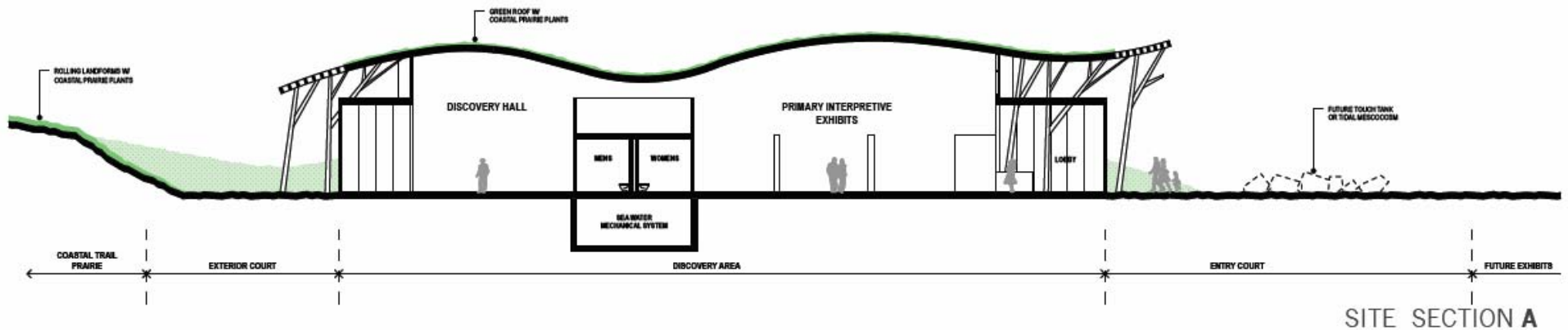
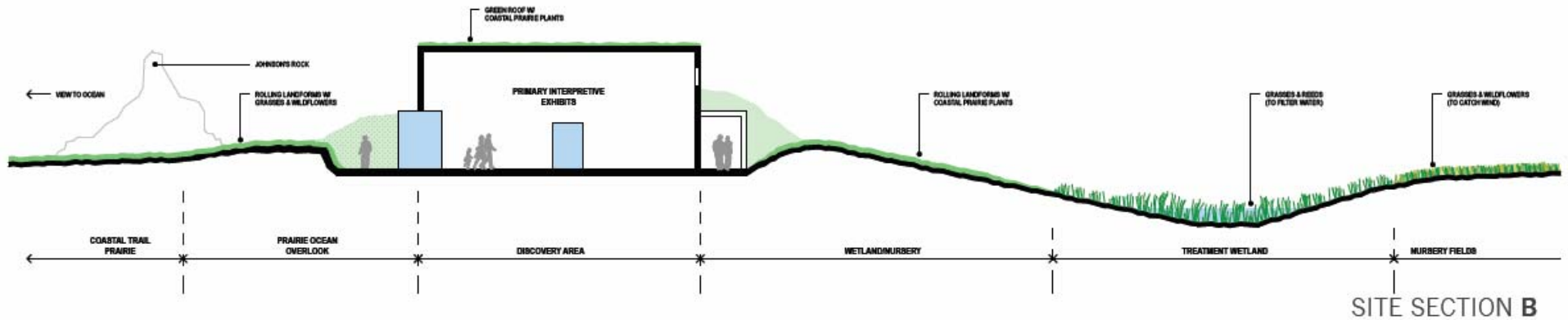
DISCOVERY CENTER FLOOR PLAN



SCHEMATIC DESIGN

June 2010

Discovery Center Sections



NOYO CENTER FOR SCIENCE AND EDUCATION

A Project of the City of Fort Bragg and Sonoma State University

BAUER AND WILEY ARCHITECTS JONES & JONES ARCHITECTS LANDSCAPE ARCHITECTS

DISCOVERY CENTER SITE SECTIONS

SCHEMATIC DESIGN

June 2010

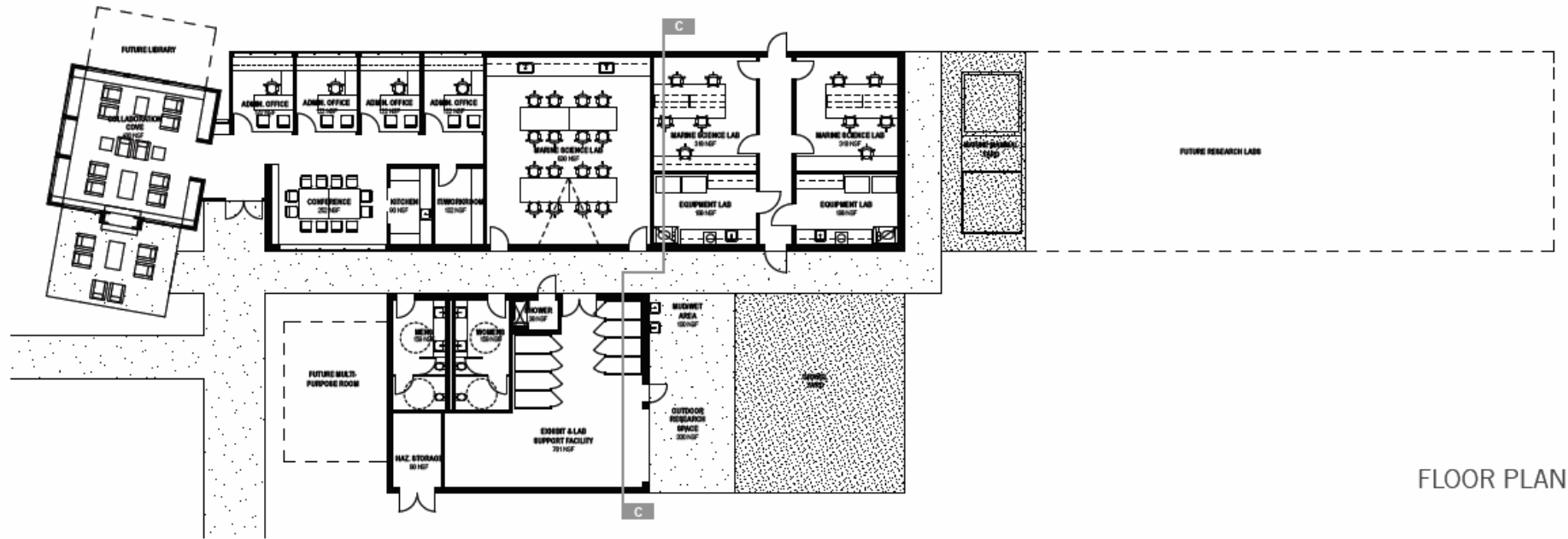




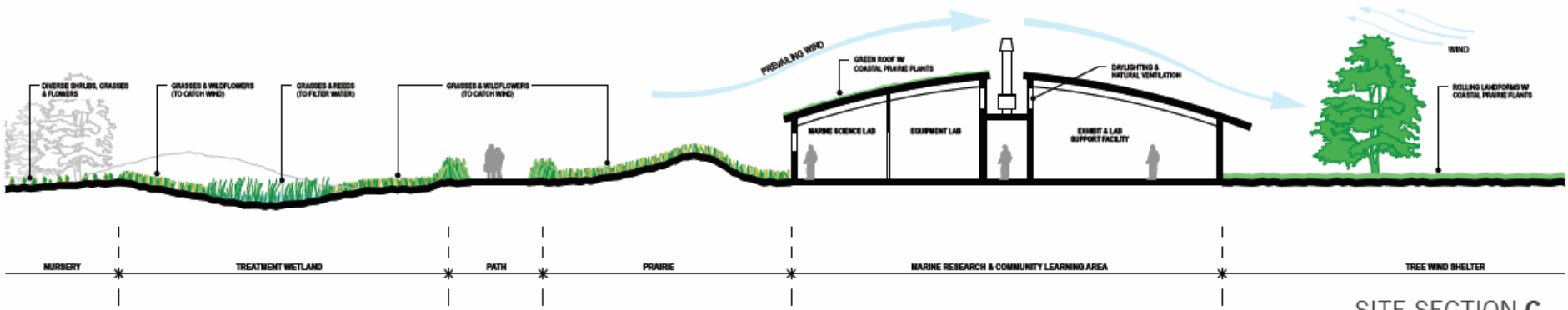
Marine Research Center

- World-class research will be supported by the Center's laboratory
- Research will address climate change and resource management in cold-water marine environments
- Research facility will be available for non-profit and higher education marine researchers

Marine Research & Community Learning Center



FLOOR PLAN



SITE SECTION C



NOYO CENTER FOR SCIENCE AND EDUCATION
A Project of the City of Fort Bragg and Sonoma State University

MARINE RESEARCH & COMMUNITY LEARNING CENTER

BAUER AND WILEY ARCHITECTS
JONES JONES ARCHITECTS LANDSCAPE ARCHITECTS



SCHEMATIC DESIGN

June 2010



Sustainable Design

- The site is suitable for LEED Gold, the budget is insufficient. LEED Silver will be achieved.

Green Building features:

- Develop vacant urban infill brownfield site
- Use and sculpt the site creatively to protect the facility from driving wind and rain
- Strive for net-zero energy use
- Use sustainable renewable materials
- Minimize water consumption
- Use low-emitting materials
- Provide bicycle storage, changing rooms, vehicle charging station & bus stop
- Demonstrate sustainable landscape design
- Minimize facility size
- Use design to evoke the natural environment & history
- Design for low maintenance
- Protect the natural features of the site and surrounding open space
- Incorporate sustainability biomimicry strategies to heighten the connection between science and education.

Project Timeline

Draft Noyo Center Development Timeline

Design & Engineering of Facility	
Completion of Schematic Design - Preliminary Plans	Complete
CEQA Review - Mitigated Negative Declaration	6/2010 - 3/2011
Permitting: Design Review & Coastal Development Permit	3/2011
Develop 100% Facility Design	3/2011 - 3/2012
Develop Interpretive Exhibit Design	3/2011 - 3/2012
Construction & Manufacture	
Project Bidding & Contract Process	3/2012 - 5/2012
Construction Begins - Groundbreaking	6/2012
Site Work & Foundation	6/2012 - 9/2012
Building Enclosure & Interior Finishes	9/2012 - 12/2013
Manufacture & Install Interpretive Exhibits	6/2013 - 3/2014
Grand Opening	5/2014

Project Operations

- City of Fort Bragg will acquire site and write grants to fund construction
- Sonoma State University (SSU) will operate the facility for 30 years

Sun	Mon	Tues	Wed	Thurs	Fri	Sat	Total
10-5 (7 hrs)	Closed	9-5 (8 hrs)	9-6 (9 hrs)	9-6 (9 hrs)	9-7 (10 hrs)	9-7 (10 hrs)	53 hrs +

