

PROJECT

ACCESSORY DWELLING UNIT (ADU)  
 PROTOTYPE  
 CITY OF FORT BRAGG  
 416 N. FRANKLIN STREET  
 FORT BRAGG, CA 95437

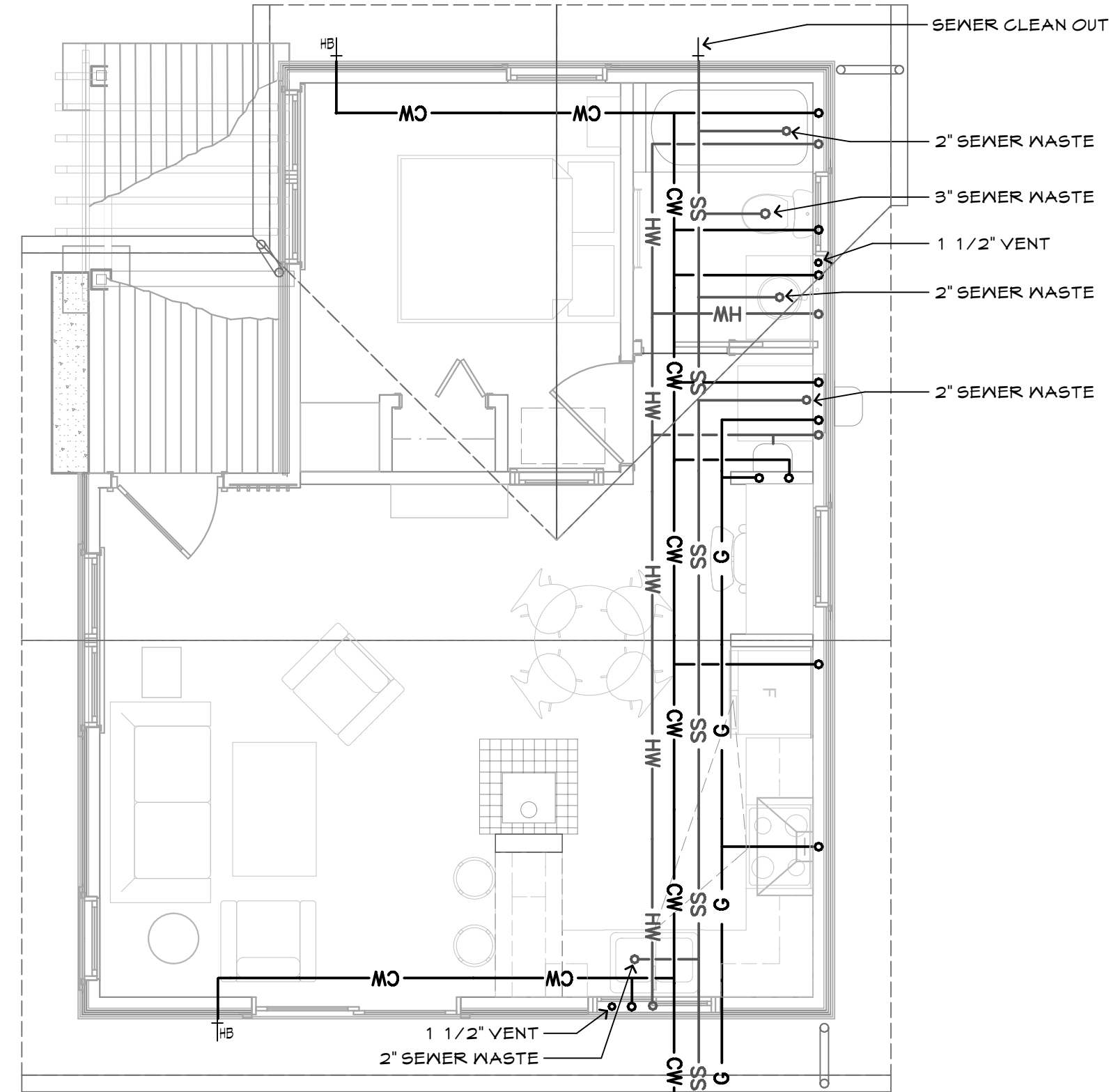
DRAWING

Elevations / Sections /  
 Plumbing Plan

PROTOTYPE  
 DESIGN SET

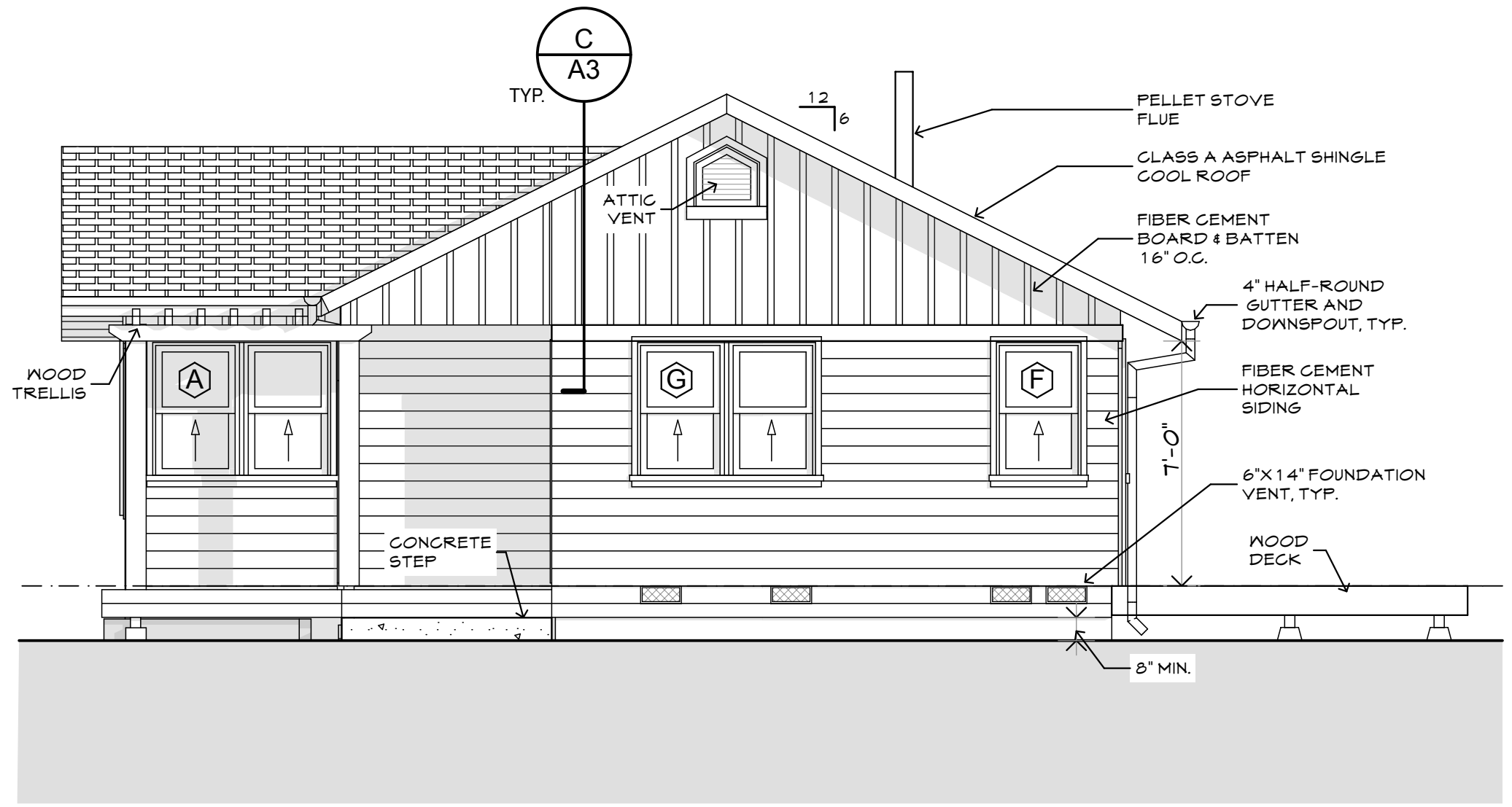
DATE  
 07/03/2009

SHEET  
 A2

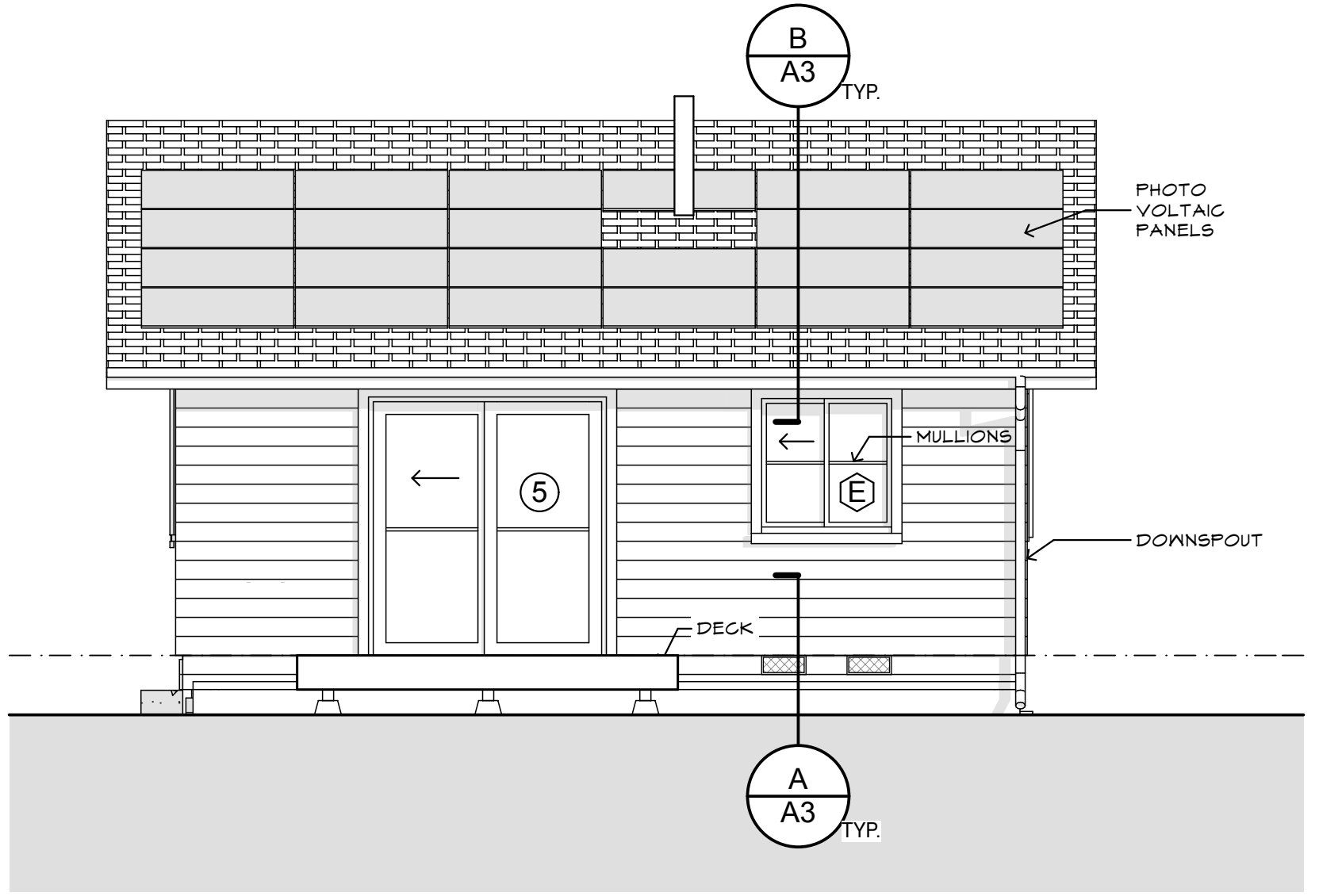


- PLUMBING NOTES:**
- 1) TERMINATION OF ENVIRONMENTAL AIR DUCTS SHALL BE A MINIMUM OF 3 FEET FROM ANY OPENINGS IN THE HOUSE, PER GMC 504.6.
  - 2) REQUIRED DISTANCES BETWEEN UTILITY TRENCHES AND LINES TO BE VERIFIED WITH LOCAL JURISDICTIONS.
  - 3) UTILITY POINT OF CONNECTIONS TO BE VERIFIED IN FIELD.

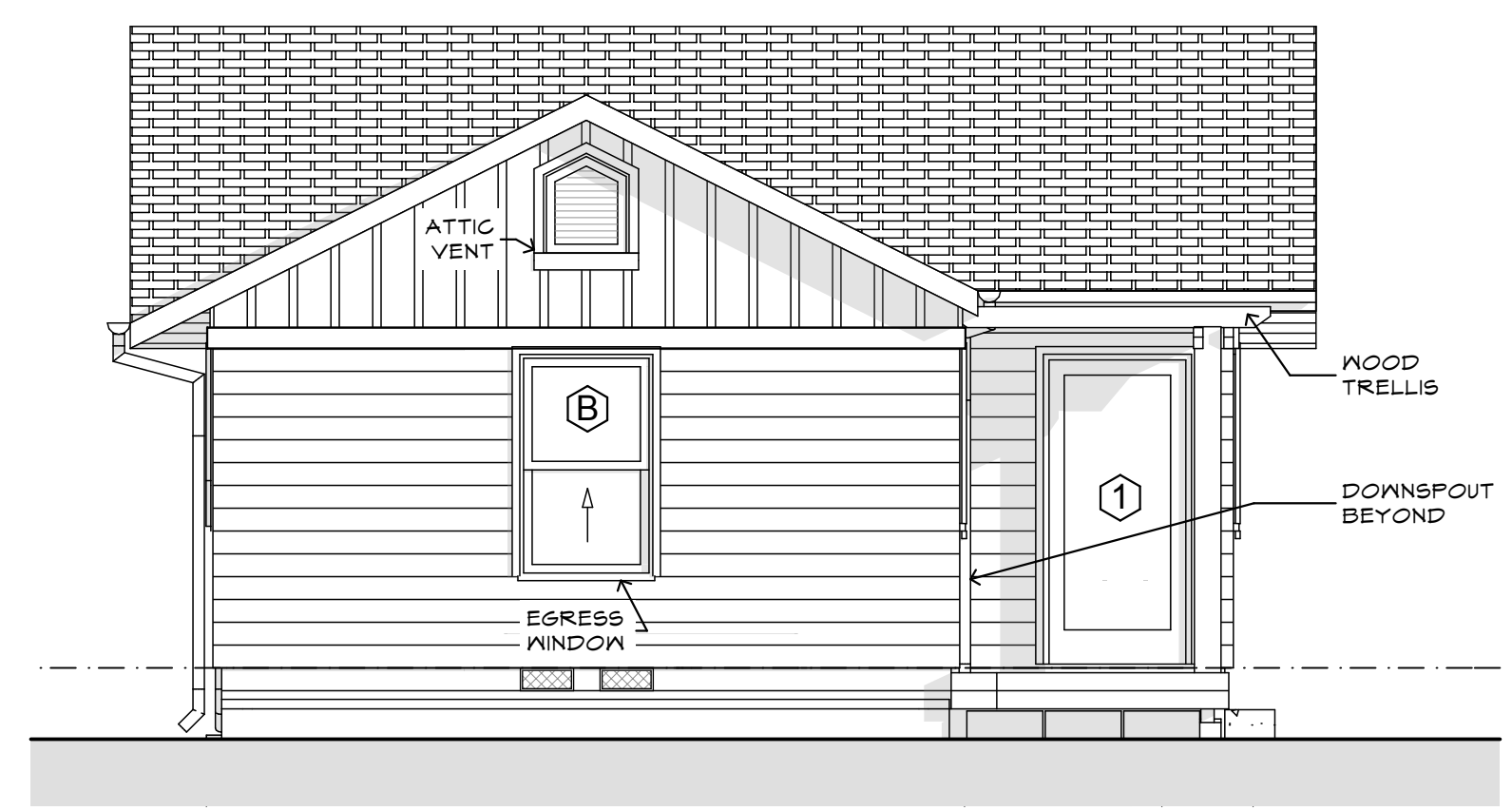
**Plumbing / Mechanical Plan**  
 SCALE: 1/4" = 1'-0"



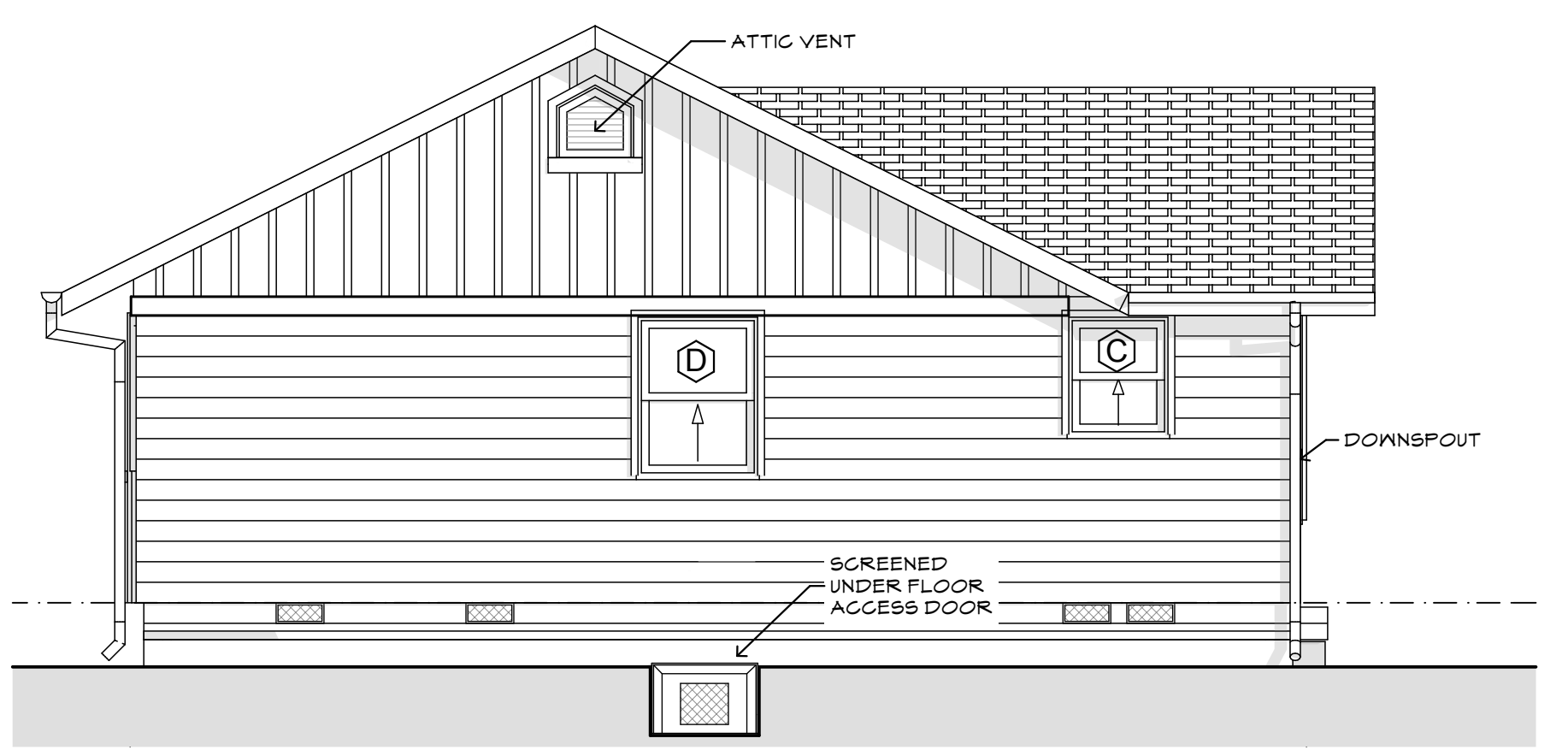
**West Elevation**  
 SCALE: 1/4" = 1'-0"



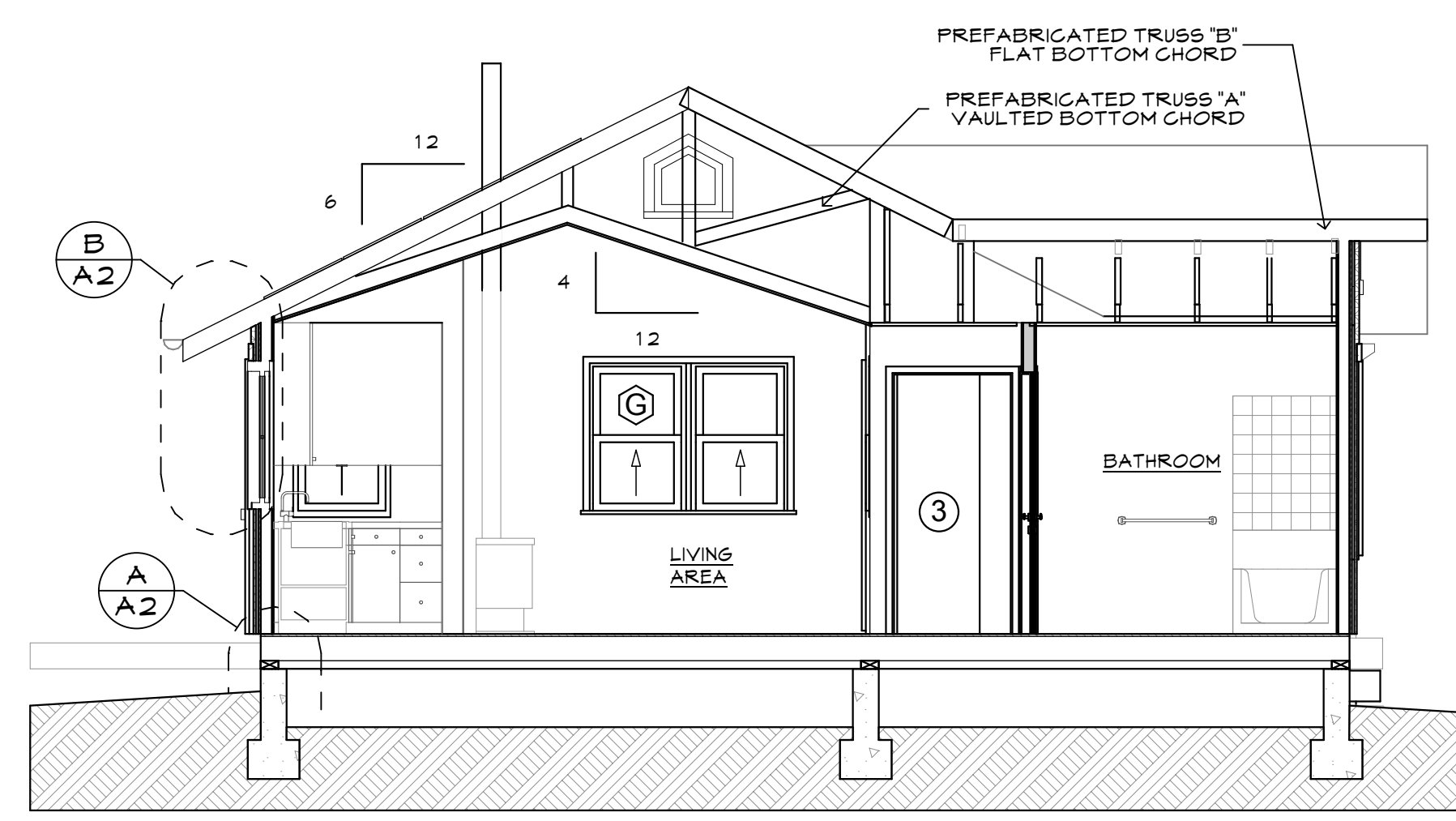
**South Elevation**  
 SCALE: 1/4" = 1'-0"



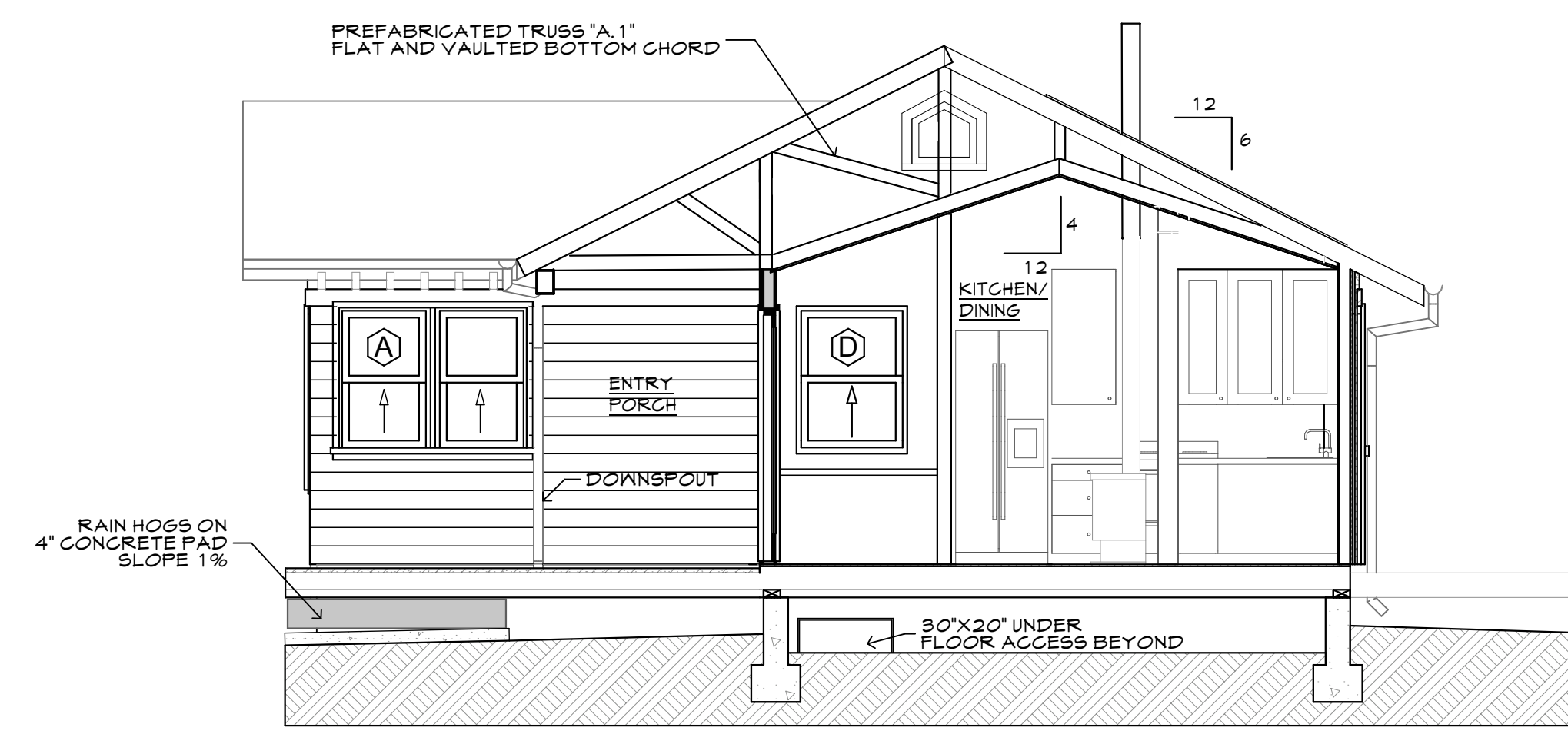
**North Elevation**  
 SCALE: 1/4" = 1'-0"



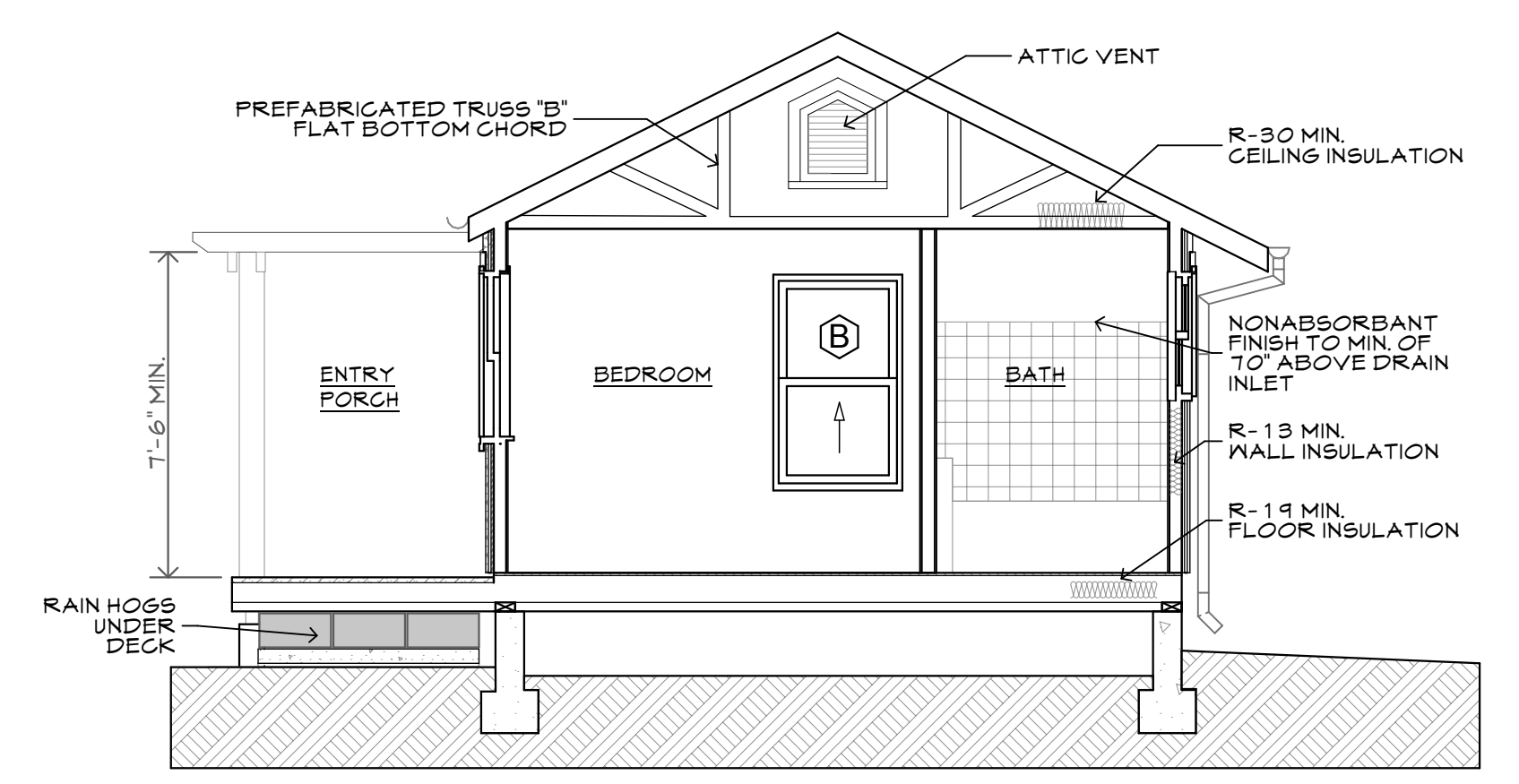
**East Elevation**  
 SCALE: 1/4" = 1'-0"



**C Section @ Kitchen & Dining**  
 SCALE: 1/4" = 1'-0"



**B Section through Living Rm.**  
 SCALE: 1/4" = 1'-0"



**A Section At Porch**  
 SCALE: 1/4" = 1'-0"

NOTE:  
 THESE MATERIALS ARE CONCEPTUAL  
 IN NATURE ONLY AND SHOULD NOT  
 BE USED AS WORKING DRAWINGS  
 OR CONSTRUCTION DOCUMENTS