



## Quarterly Report on Sales Tax and Business Activity

### Top 25 Sales Tax Remitters

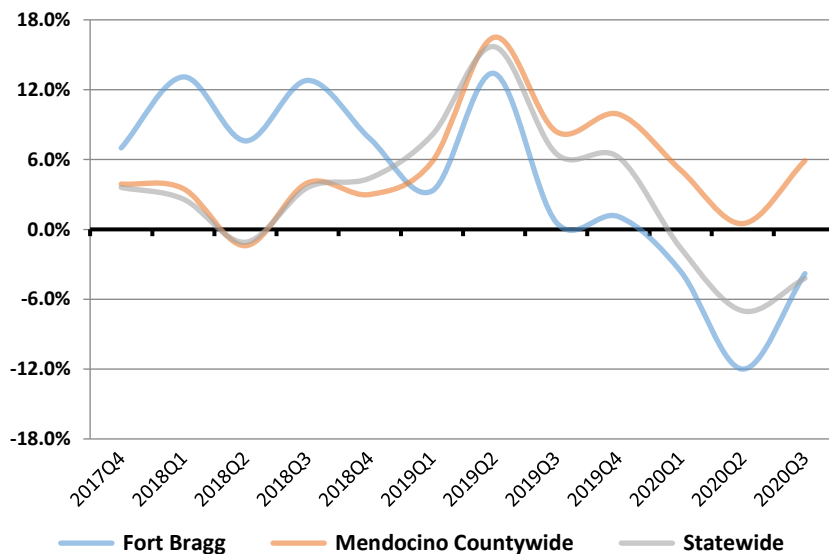
- ARCO AM/PM MINI MARTS
- BOATYARD TOBACCO
- CANCLINI TV & APPLIANCE
- CHEVRON SERVICE STATIONS
- CVS/PHARMACY
- DOLLAR TREE STORES
- GEO AGGREGATES
- HARVEST MARKET
- KEMPPE LIQUID GAS
- MCDONALD'S RESTAURANTS
- MENDO MILL & LUMBER COMPANY
- MENDOCINO COUNTY HORTICULTURE SUPPLY
- O'REILLY AUTO PARTS
- PURITY SUPERMARKET
- REDWOOD COAST FUELS
- RINO SERVICE STATIONS
- RITE AID DRUG STORES
- ROSSI BUILDING MATERIALS
- SAFEWAY STORES
- SINCLAIR SERVICE STATIONS
- SPORT CHRYSLER-JEEP-DODGE
- TACO BELL
- THE BREWERY SHOP
- TRUE VALUE HARDWARE
- TWO SHORT SALES

### 3rd Quarter 2020 in Review

California sales tax cash receipts increased by 1.1% from the same quarter last year. In this jurisdiction sales tax cash receipts increased by 12% from the same quarter last year due to a increase of \$5,622,000 in Taxable Sales.

Cash Receipts	Quarter	Annual
<b>Fort Bragg</b>	12.0%	-3.8%
<b>Mendocino Countywide Pool</b>	55.2%	40.6%
<b>Mendocino Countywide</b>	14.4%	5.9%
<b>North Coast Region</b>	13.3%	3.8%
<b>Statewide</b>	1.1%	-4.2%

### Annualized Percent Change in Sales Tax Cash Receipts



### Business Activity

	Fort Bragg		North Coast		California	
	Quarter	Annual	Quarter	Annual	Quarter	Annual
General Retail	-0.1%	-8.0%	3.9%	-2.0%	-14.2%	-13.6%
Food Products	-5.6%	-8.8%	-43.5%	-0.5%	-28.1%	-18.4%
Transportation	-14.4%	-10.9%	-6.9%	-3.3%	-12.8%	-12.1%
Construction	11.3%	2.8%	-9.0%	7.3%	-12.1%	-2.9%
Business To Business	-17.0%	-23.2%	-13.9%	-11.2%	-13.7%	-11.1%
<b>TOTAL LOCAL BUSINESS ACTIVITY</b>	<b>-4.5%</b>	<b>-8.1%</b>	<b>-13.9%</b>	<b>-1.6%</b>	<b>-16.7%</b>	<b>-12.7%</b>
<b>COUNTYWIDE POOL ACTIVITY</b>	<b>52.1%</b>	<b>27.7%</b>	<b>45.7%</b>	<b>35.0%</b>	<b>40.5%</b>	<b>28.4%</b>

# City of Fort Bragg



## News

- Economic Activity:** U.S. real GDP grew at a record-high 33.1% in the third quarter of 2020. The growth was driven by personal consumption expenditures (PCE) increasing by .5% from September. The \$63.5 billion increase in PCE for October reflected increases of \$13.2 billion in spending for goods and \$50.3 billion in spending for services. (CDTFA Finance Bulletin, November 2020)
- Employment:** California's unemployment rate improved to 11.0% in September, a .4% decrease from previous month. California's labor force is still 839,000 fewer in September than in February of this year. The total labor force currently is 1,870,900. The U.S. unemployment rate declined for the sixth consecutive month to 6.9% in October. The U.S. labor force participation rate rose by 0.3% to 61.7%, and civilian employment rose to 149.8 million in October. (CDTFA Finance Bulletin, November 2020)

## Fort Bragg

### Annual Per Capita Sales Tax

Adjusted for Inflation

(Constant 2016 \$)

